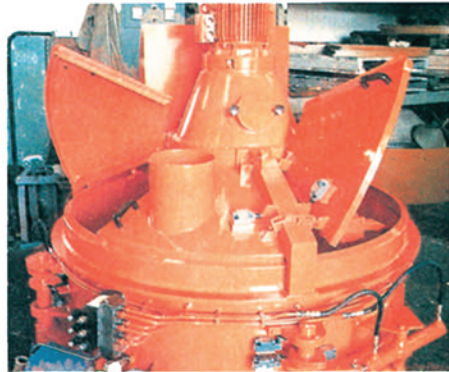
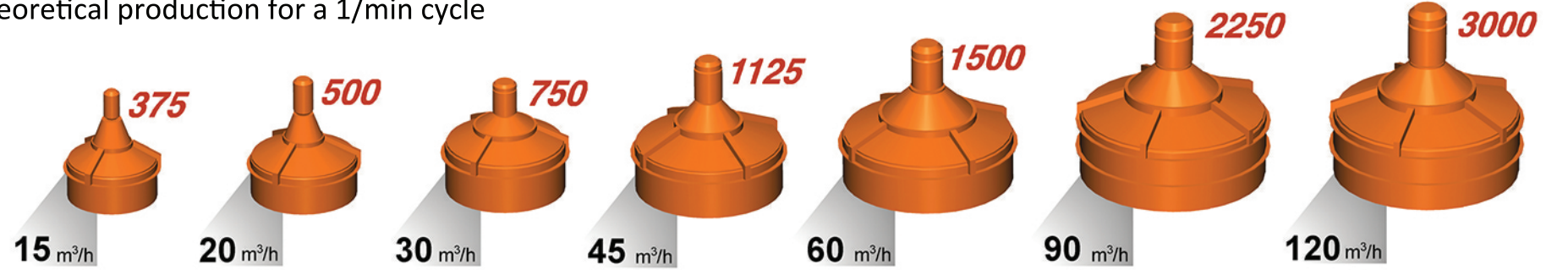


CONCRETE MIXER

Theoretical production for a 1/min cycle



Countercurrent mixer for a better concrete quality and higher productivity

The rotating mixing stars with the mixing shovels are moving through the batch in the same rotation direction as the rotor. Side scrapers force back the material from the wall towards the mixing stars. This ensures entirely homogeneous mixing within the shortest time even with difficult material.

It is possible to produce up to 60 batches per hour, depending on the concrete quality and the material feeding system. Powerful drive from the top to the planetary gear with automatic lubrication.

All mixer types from PGM 1125 are equipped with a starting hydraulic coupling between motor and planetary gear.

This allows a smooth starting of the mixer, also in case of mixing operation interruptions.

Water jet nozzles which are circularly arranged ensure a quick water feeding, a uniform distribution of the water on the complete batch is given by the mixer design. Fast discharge of the mixer is guaranteed by a large pneumatically operated gate.

4 discharge gates can be provided.

For the cleaning and routine maintenance the mixer cover is provided with large flaps with safety limit switches. The whole interior space of the mixer is used as mixing room, cleaning is therefore fast and easy.

A great advantage of the countercurrent mixing system is the low wear on the high-quality vertical lining plates and the bottom lining plates which can easily be changed, therefore remarkably long lifetime of this wear plates and cost saving. The mixing shovels have rubber linings and are fixed on to height-adjustable supporting arms.

On request the mixers can also be supplied with a material hoist.

The material skip is equipped with a bottom discharge gate and dust flap. The unilayer hoisting cable drum with cut-in cable grooves ensures an exact cable guiding and a long lifetime of the cables.

